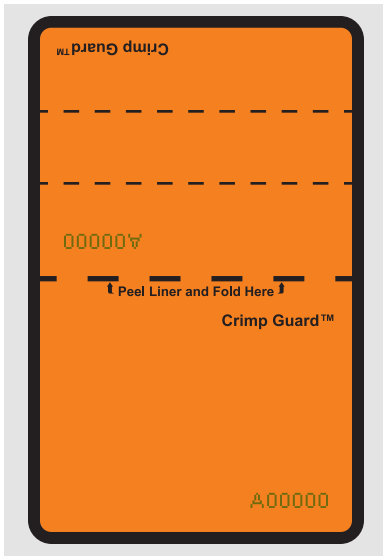
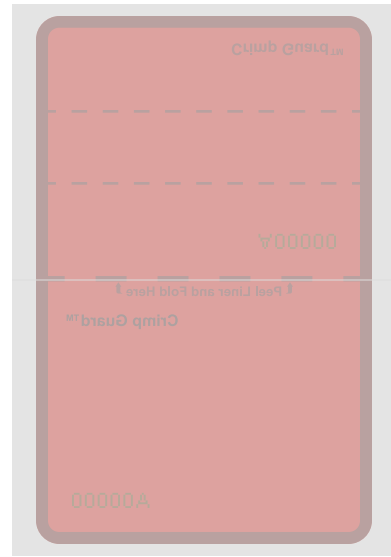


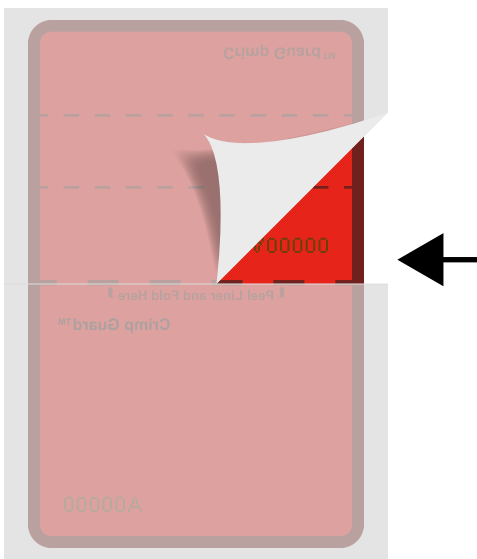
SEAL FRONT



SEAL BACK

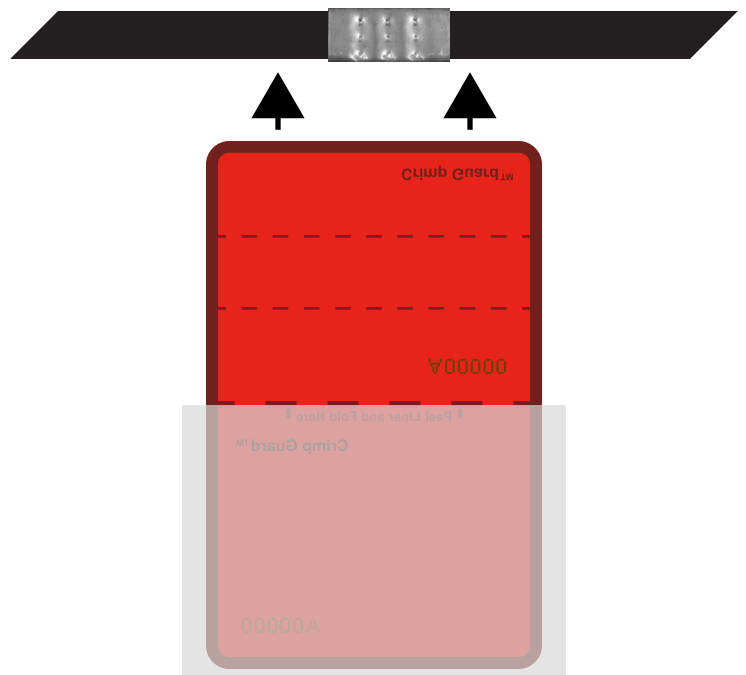


STEP 1



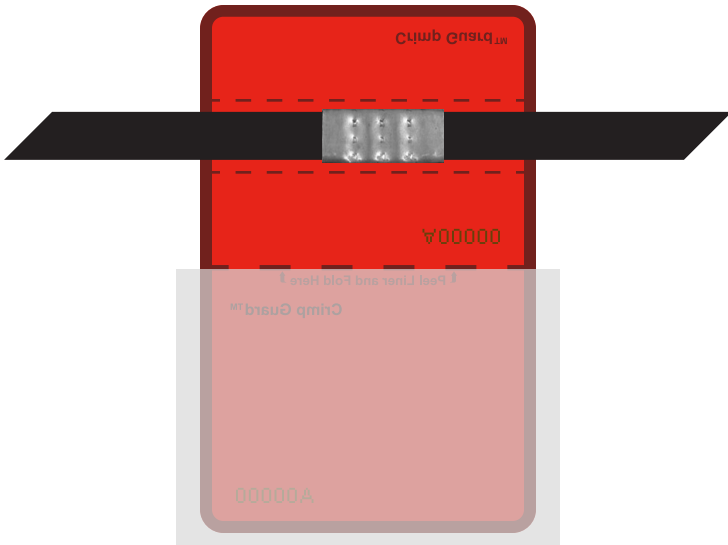
Remove top portion of paper liner.

STEP 2



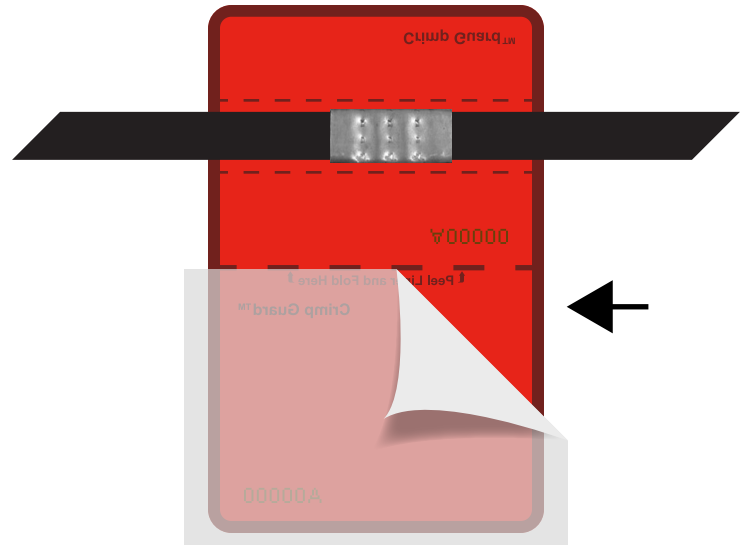
Slide seal under the crimp.

STEP 3



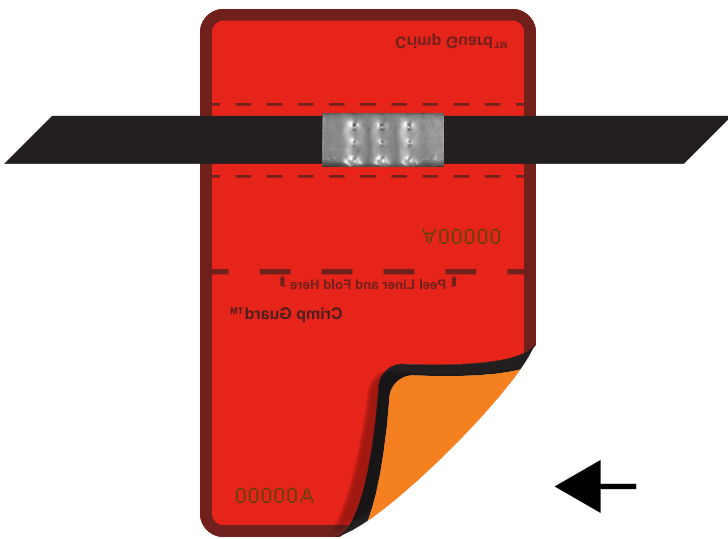
Center crimp
between lines.

STEP 4



Remove bottom portion
of paper liner.

STEP 5



Peel lower corner and
fold seal in half.

STEP 6



Sandwich the banding
between the seal.

STEP 7



Press the seal firmly against the crimp and banding. Smooth the seal so it lays flat.